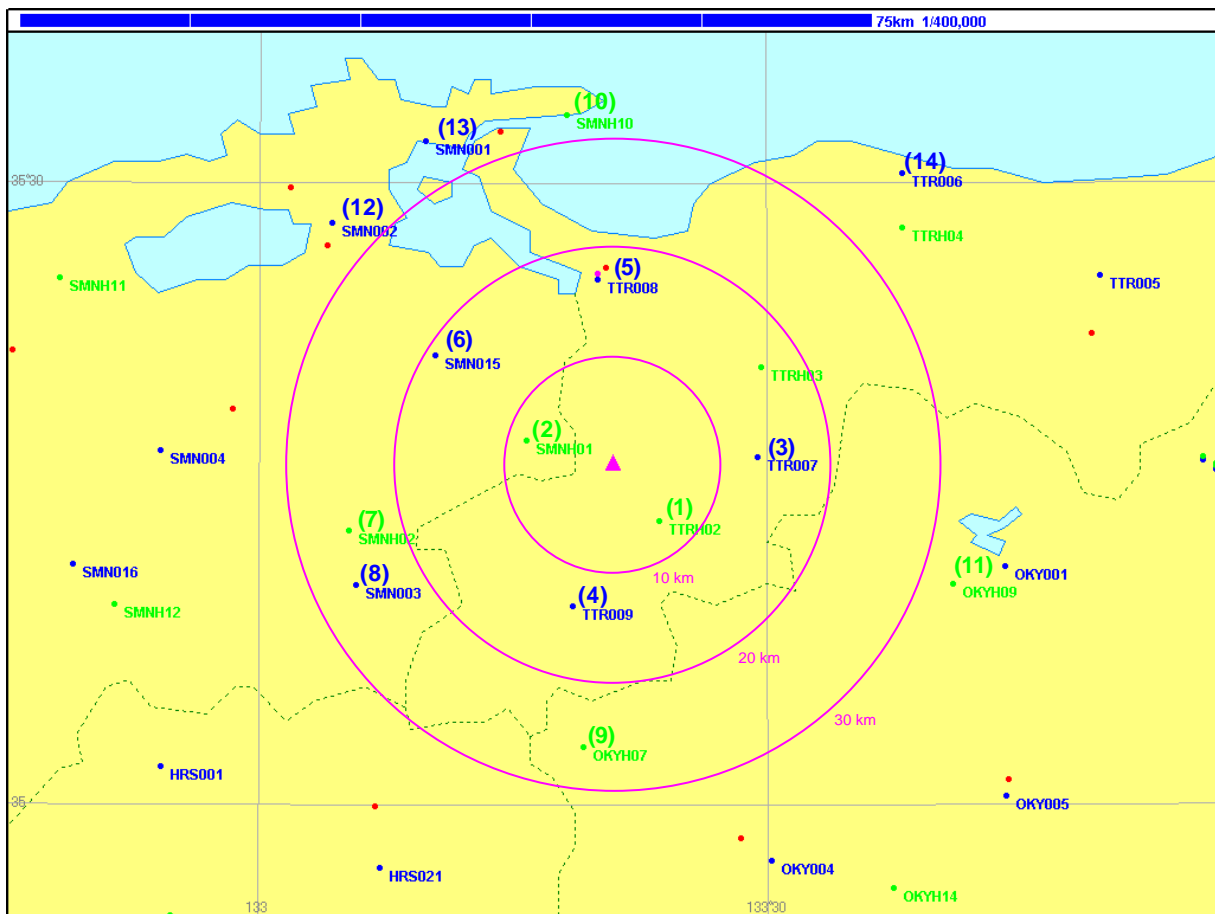


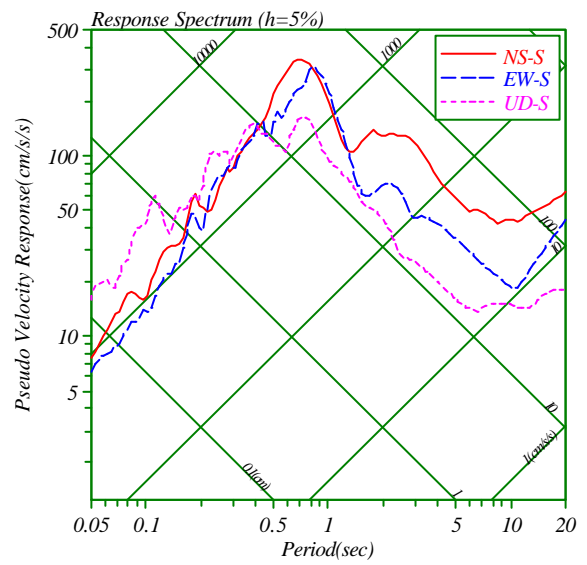
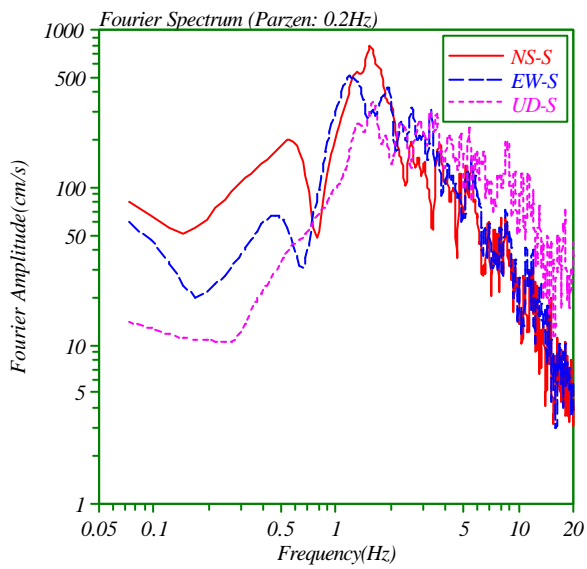
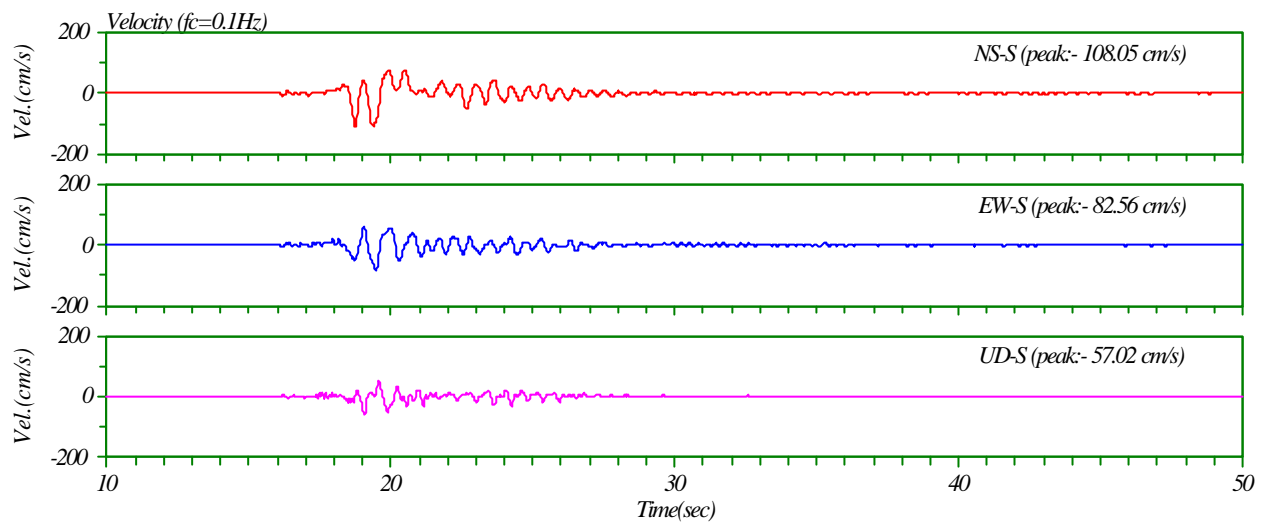
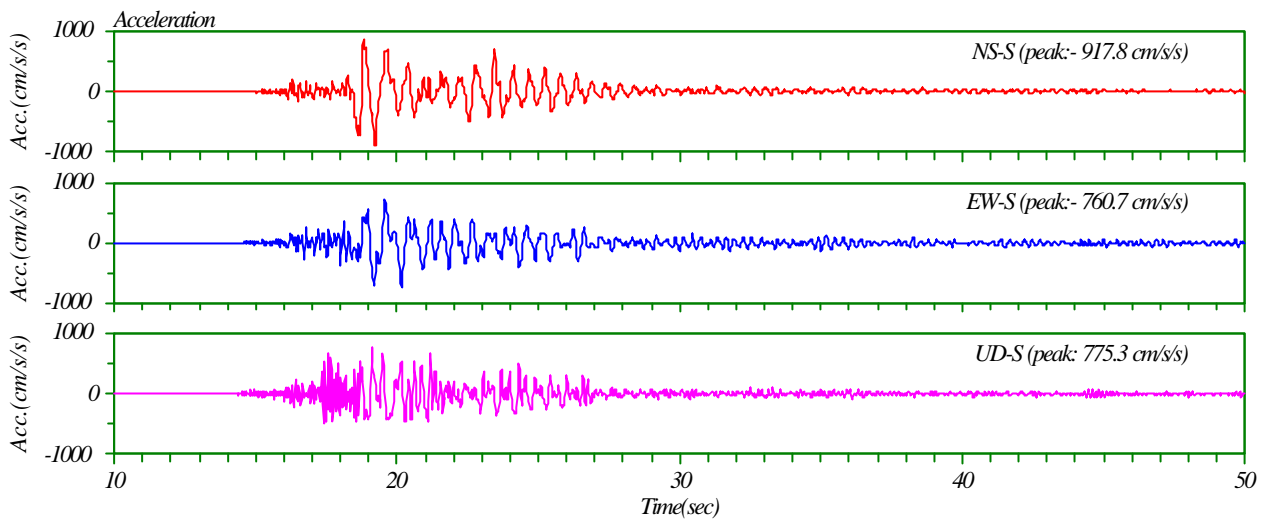
鳥取県西部地震における K-Net 及び KiK-Net の観測記録

K-Net 及び KiK-Net(地表)の最大加速度

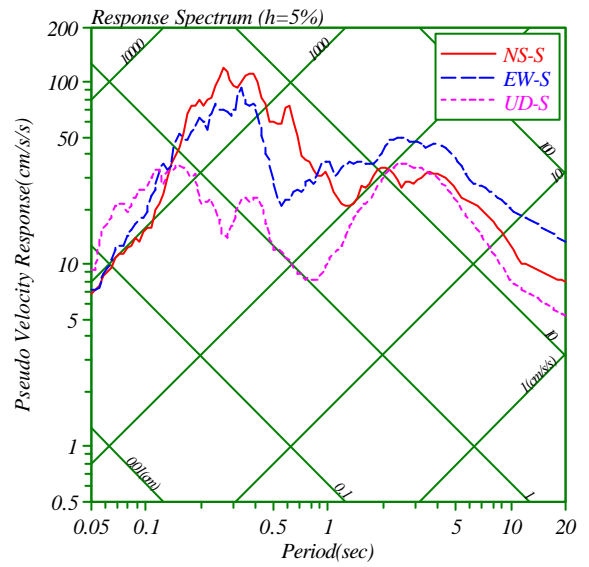
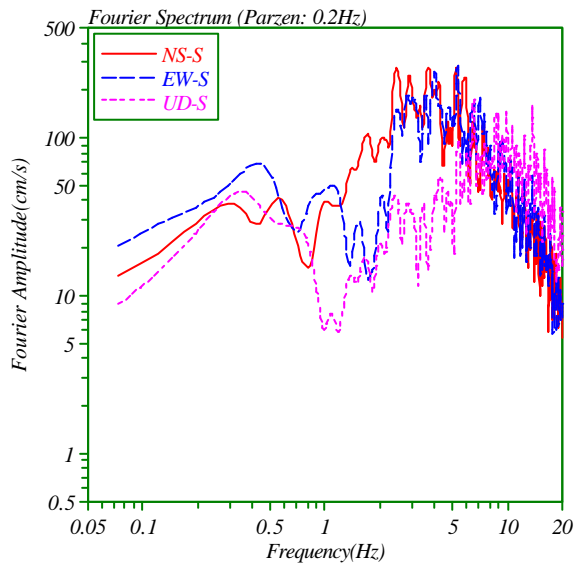
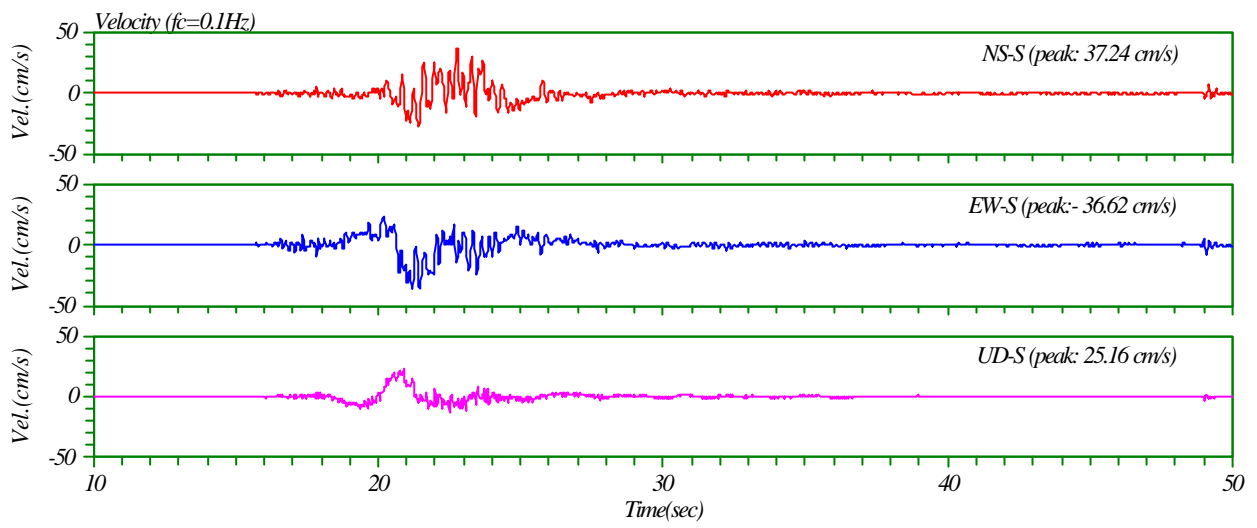
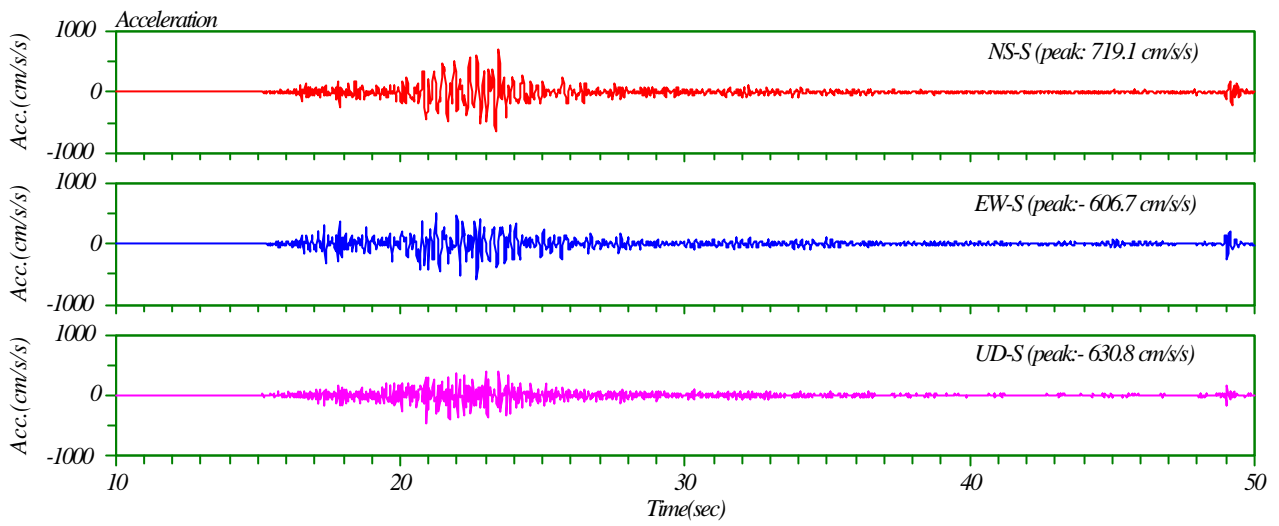
#	Code	Δ (km)	PGA (cm/s <sup>2</sup> )			Notes
			NS	EW	UD	
(1)	TTRH02	6.6	917.8	760.7	775.3	日野
(2)	SMNH01	7.9	719.1	606.1	630.8	伯太
(3)	TTR007	12.8	725.9	573.2	403.7	江府
(4)	TTR009	13.4	628.2	595.5	289.3	日南
(5)	TTR008	16.5	314.4	383.6	307.7	米子
(6)	SMN015	18.5	150.5	267.5	154.1	広瀬
(7)	SMNH02	24.4	564.1	314.5	367.2	仁多
(8)	SMN003	25.5	501.6	316.9	152.4	横田
(9)	OKYH07	25.6	179.7	127.1	124.3	神郷
(10)	SMNH10	31.3	155.1	226.3	134.4	美保関
(11)	OKYH09	32.2	181.9	283.8	251.6	湯原
(12)	SMN002	33.1	150.6	175.0	105.4	松江
(13)	SMN001	33.3	230.5	246.7	82.9	美保関
(14)	TTR006	36.5	310.0	259.2	79.6	赤碕



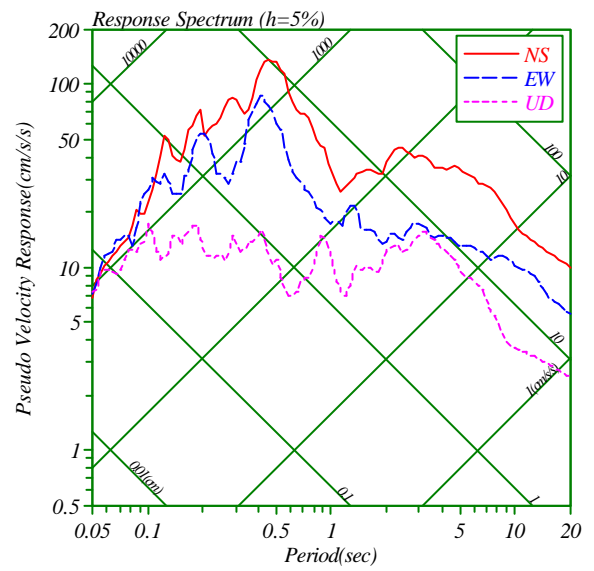
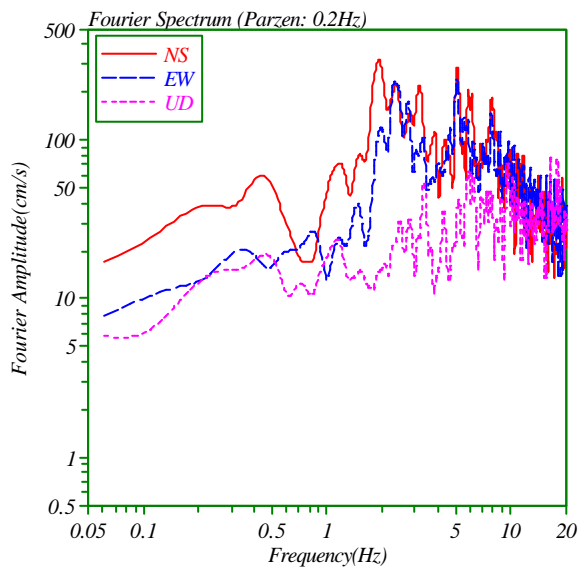
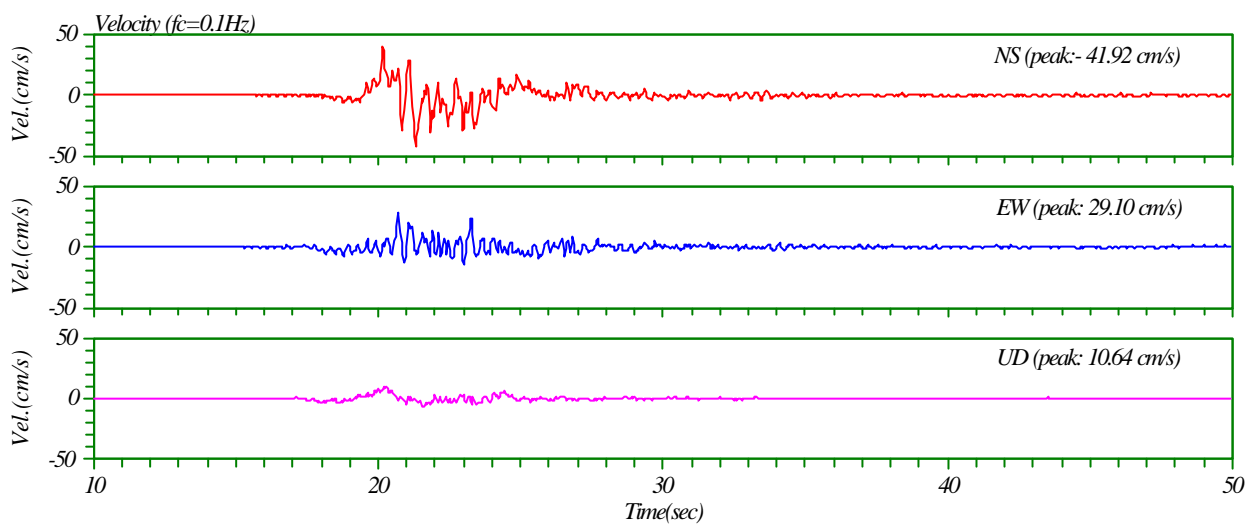
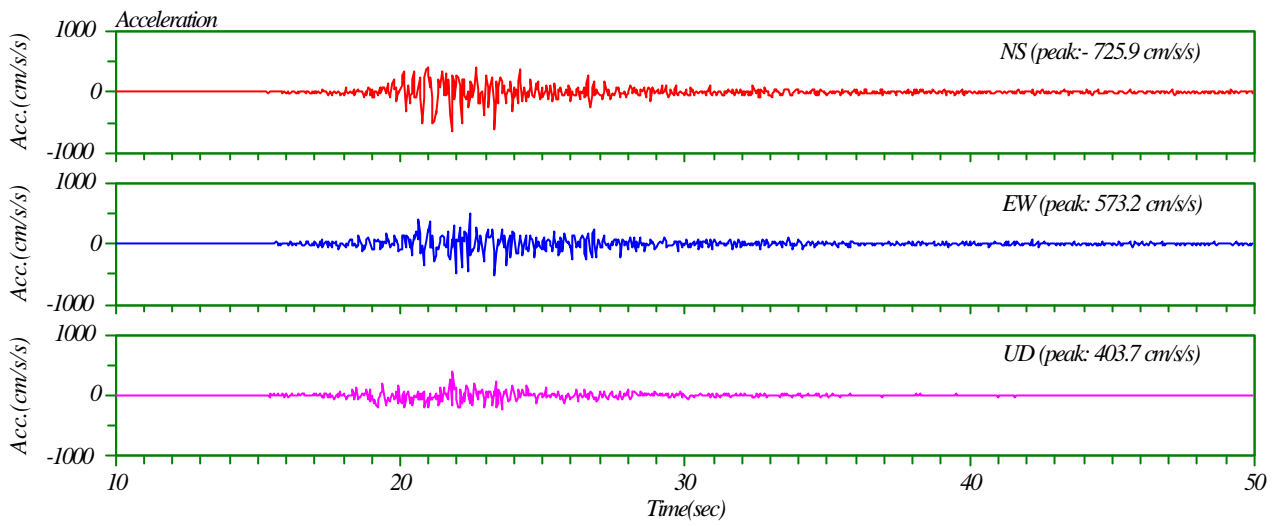
震央距離 30 km 以内の観測地点(表中(1)~(9))の加速度、速度、加速度フーリエスペクトル及び 5% 擬似速度応答スペクトルを次頁以降に示す。観測地点の詳細は各 Net の Web Site (K-Net: <http://www.k-net.bosai.go.jp/>、KiK-Net: <http://www.kik.bosai.go.jp/>)を参照してください。



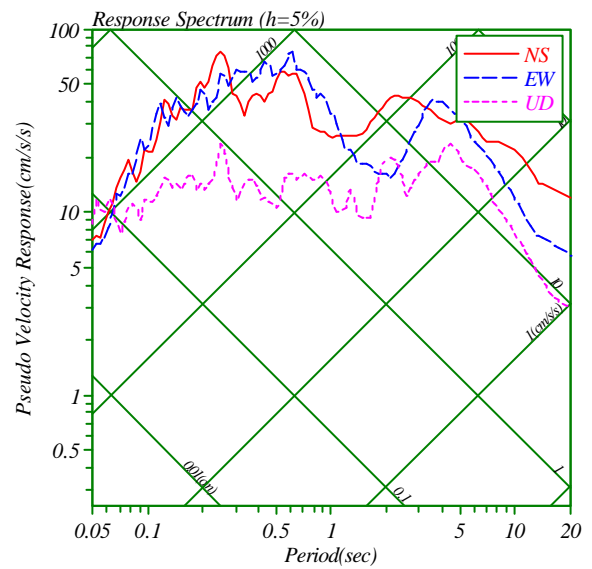
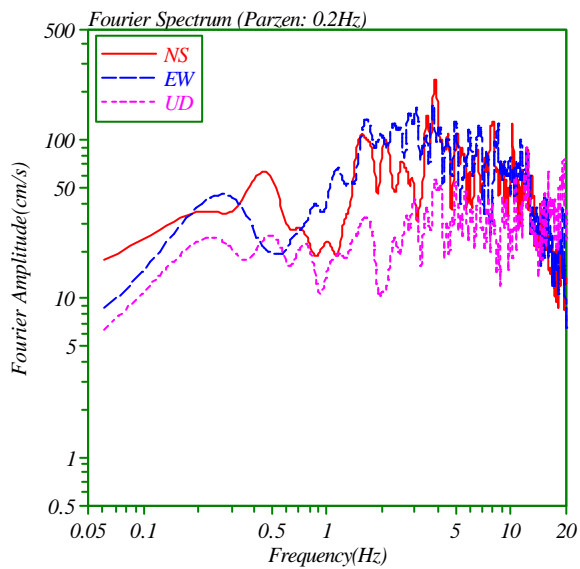
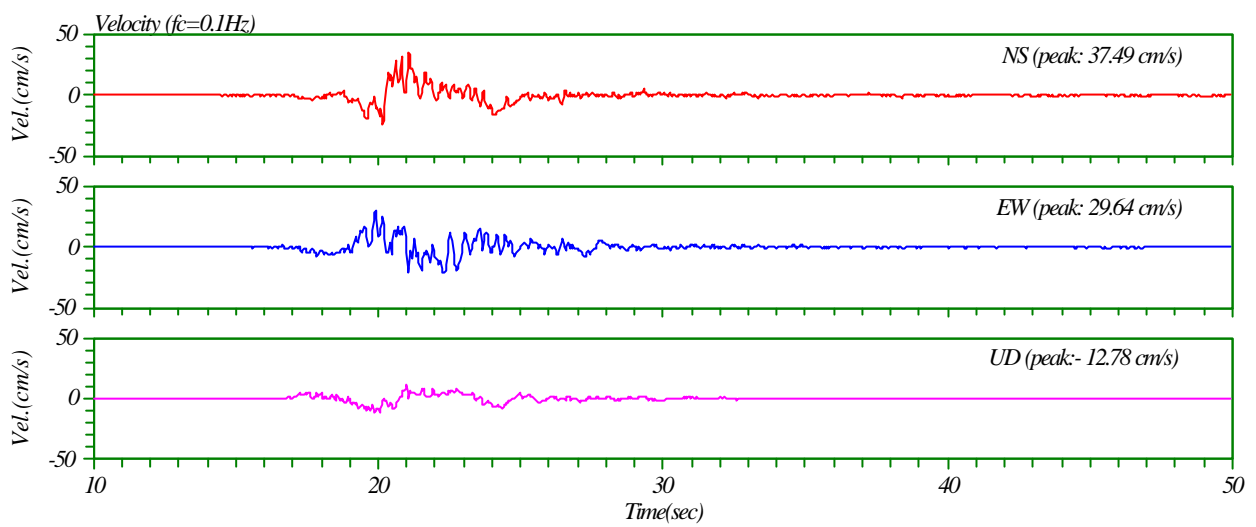
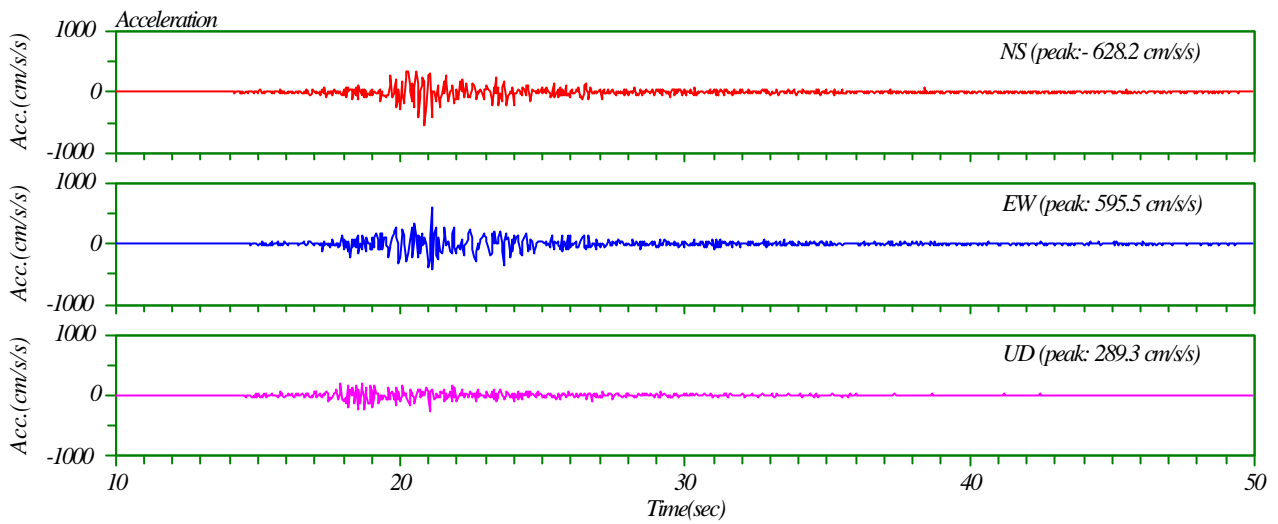
(1) TTRH02 (KiK-Net: 日野)



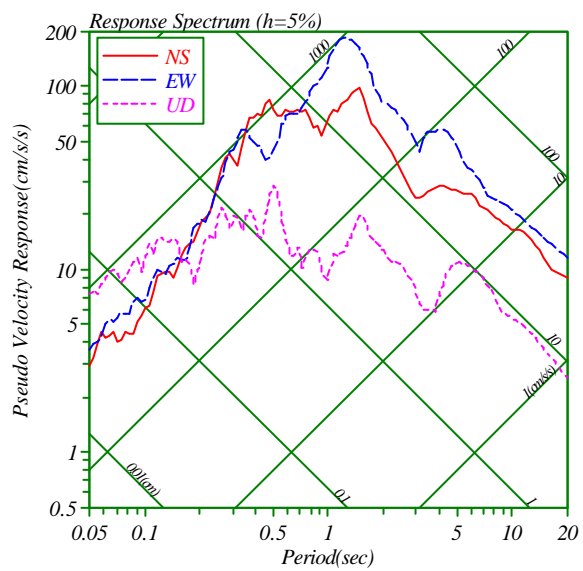
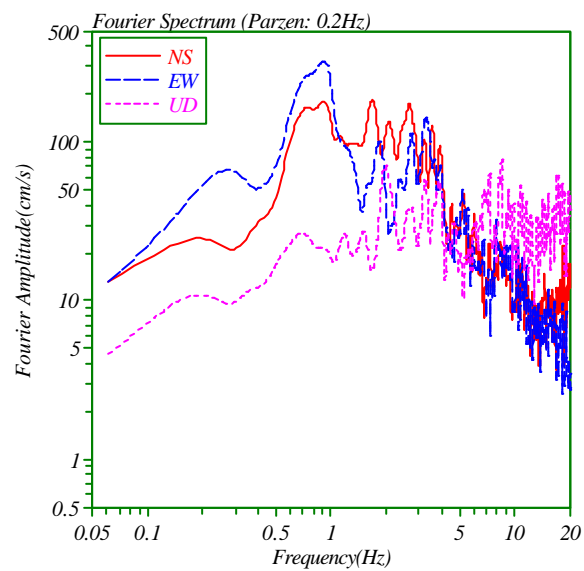
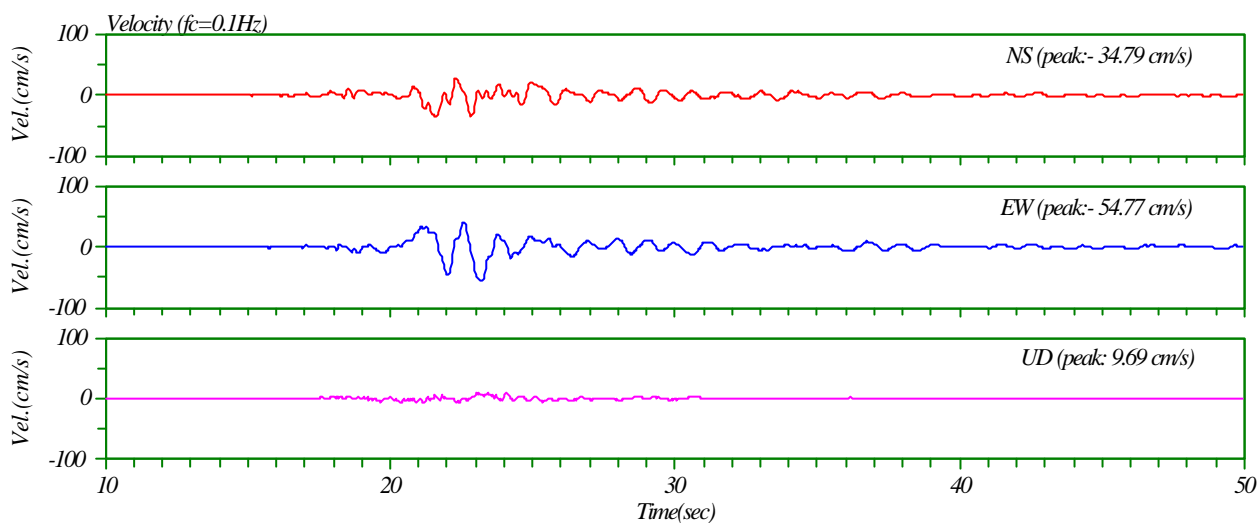
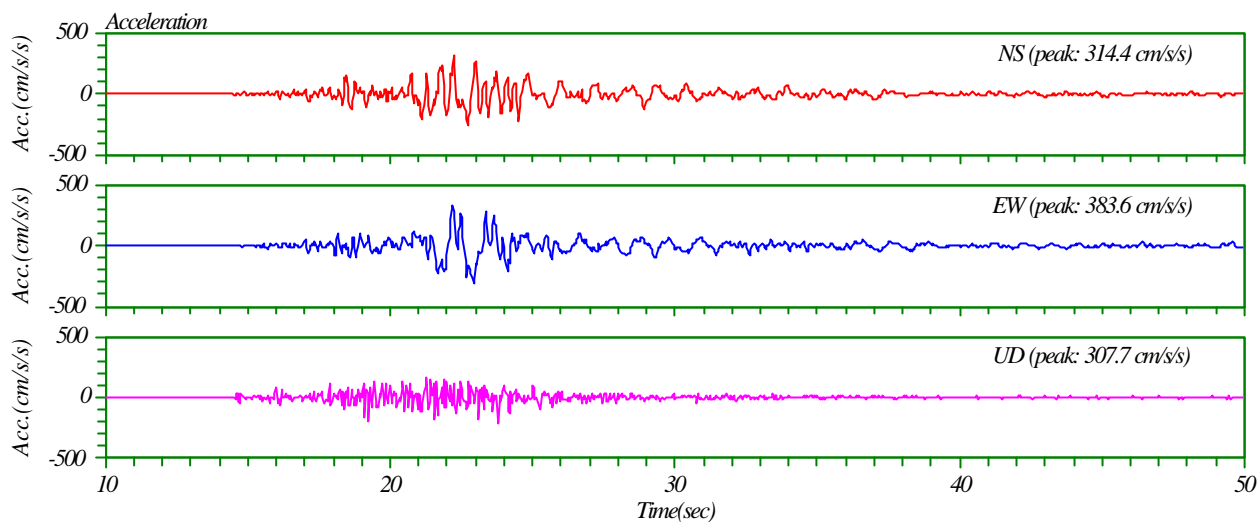
(2) SMNH01 (KiK-Net: 伯太)



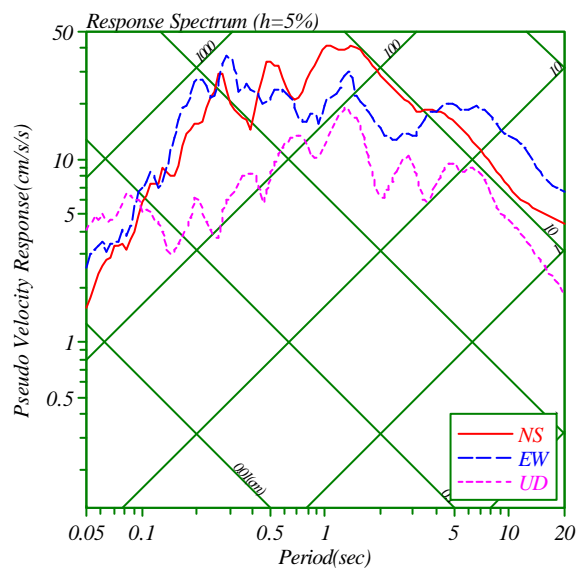
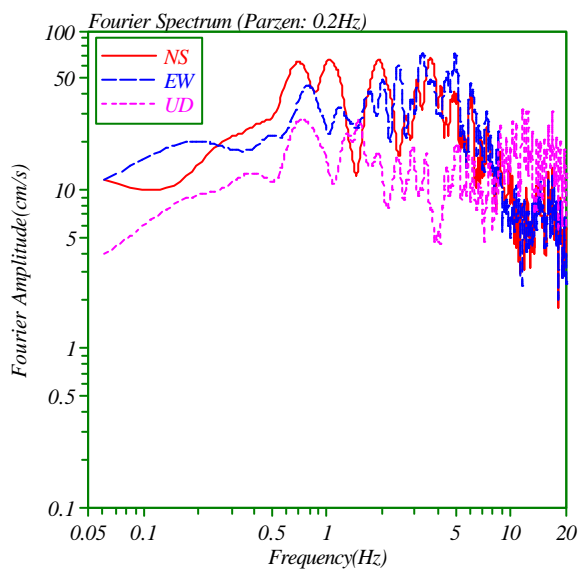
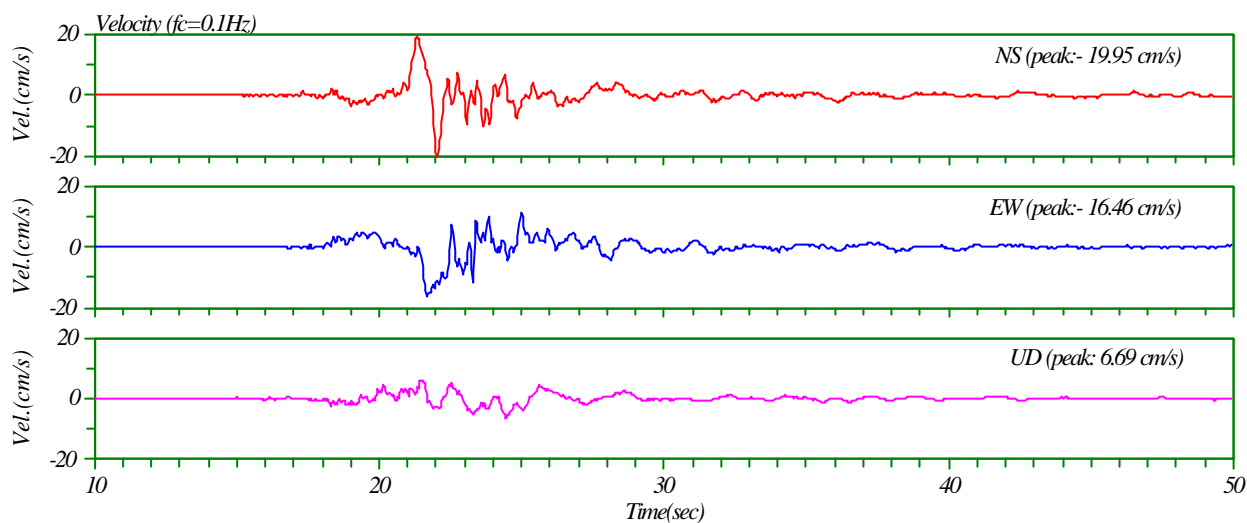
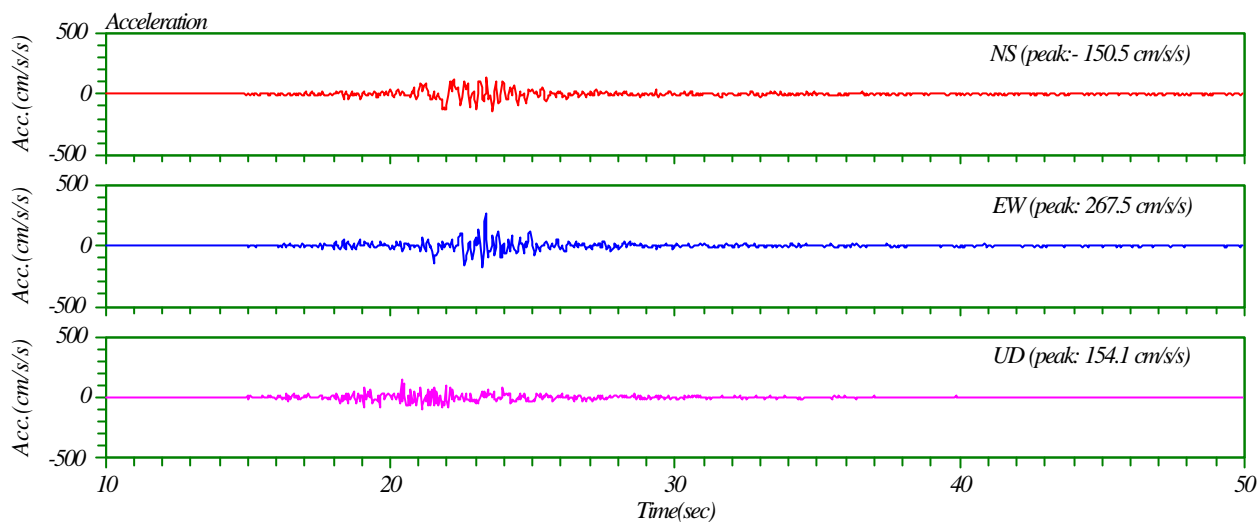
(3) TTR007 (K-Net: 江府)



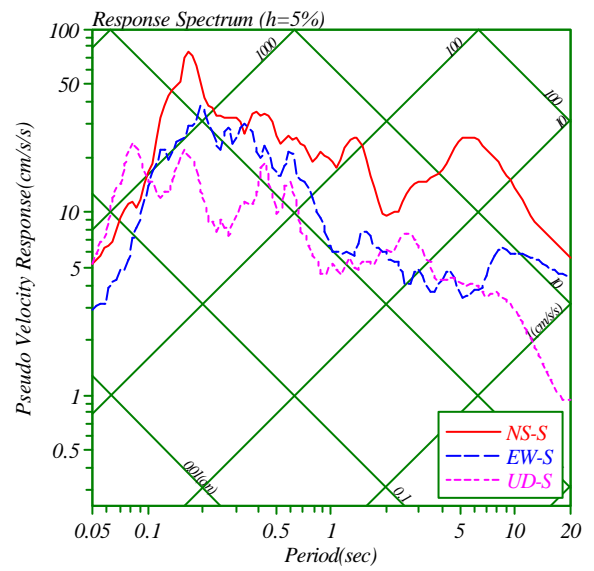
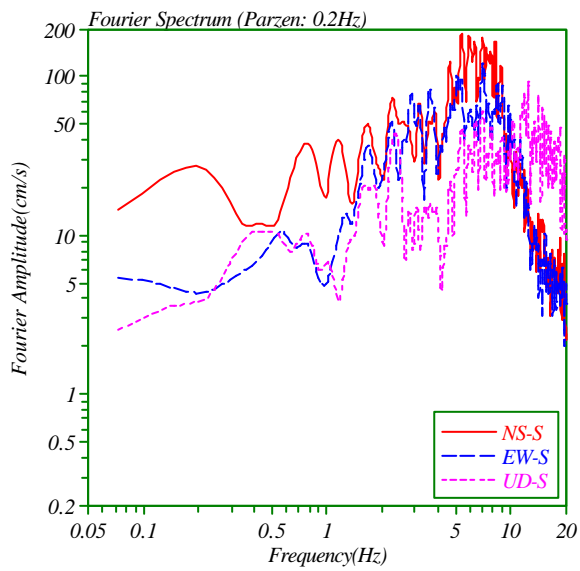
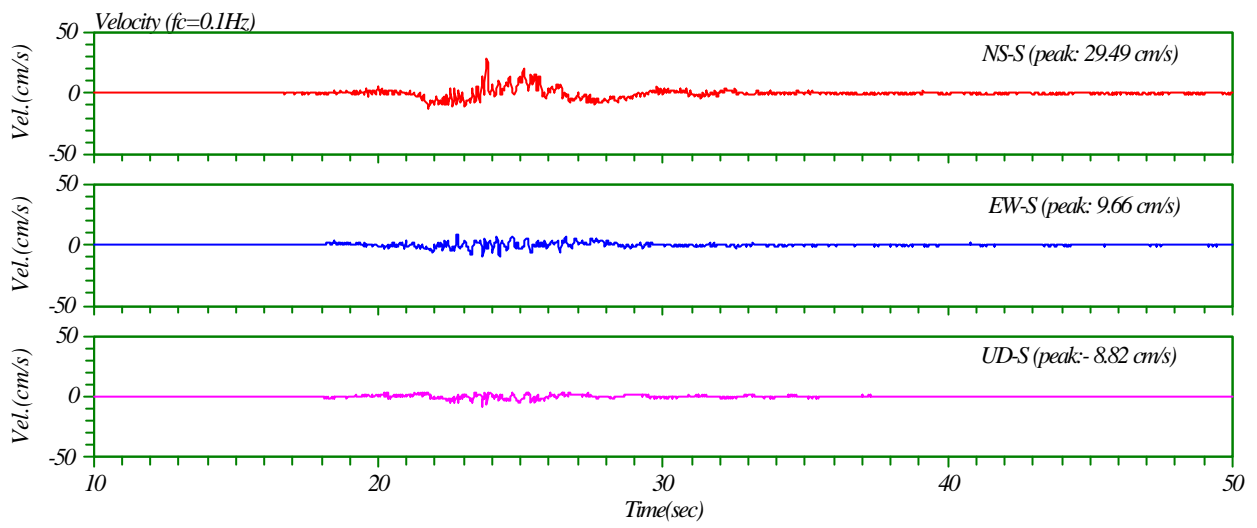
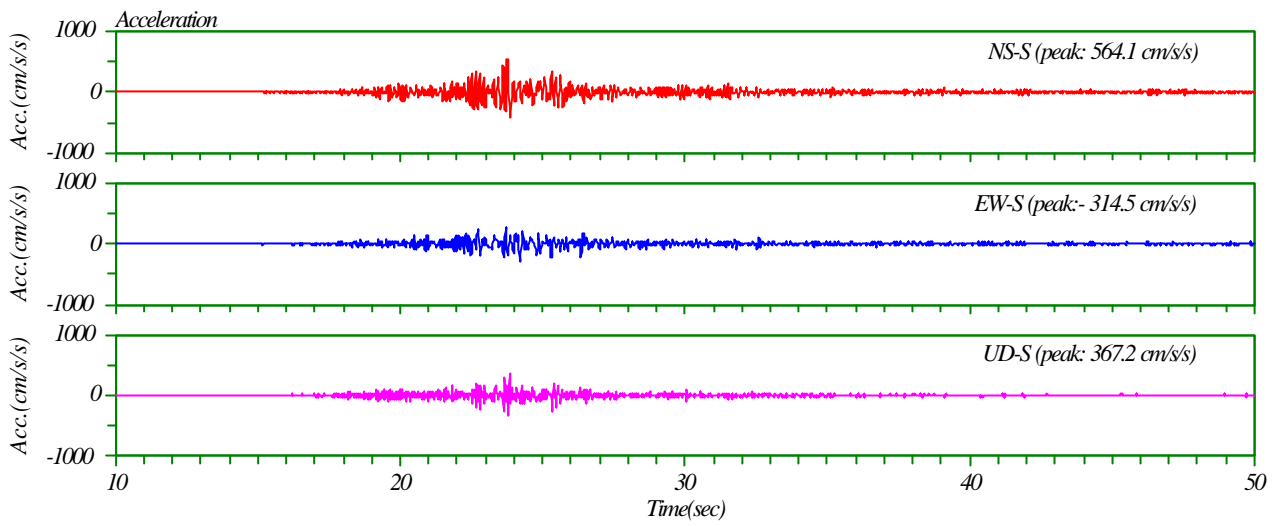
(4) TTR009 (K-Net: 日南)



(5) TTR008 (K-Net: 米子)

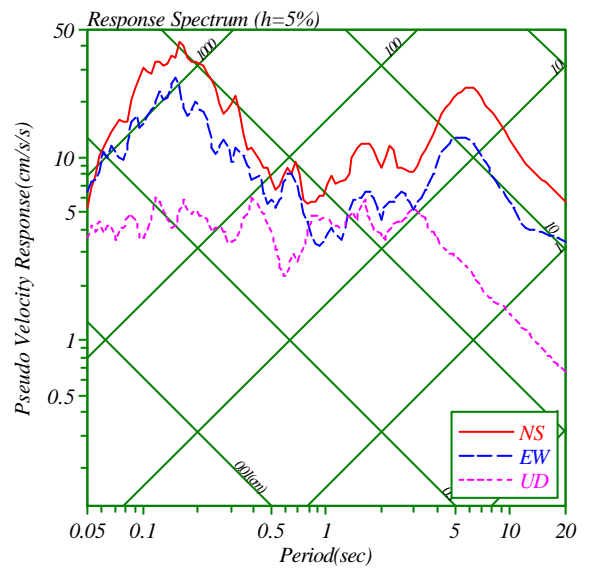
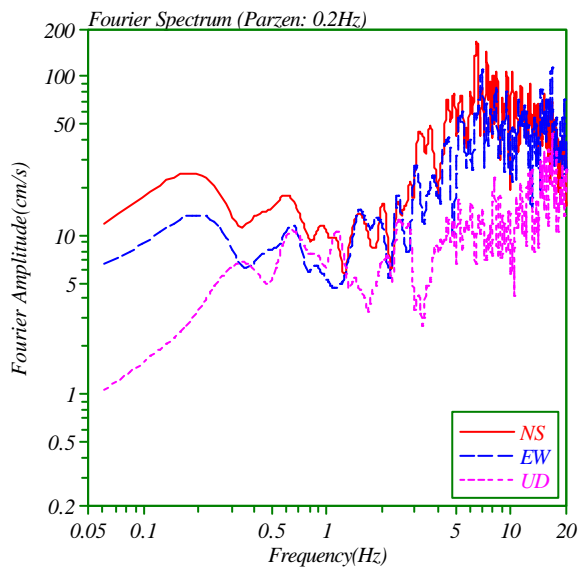
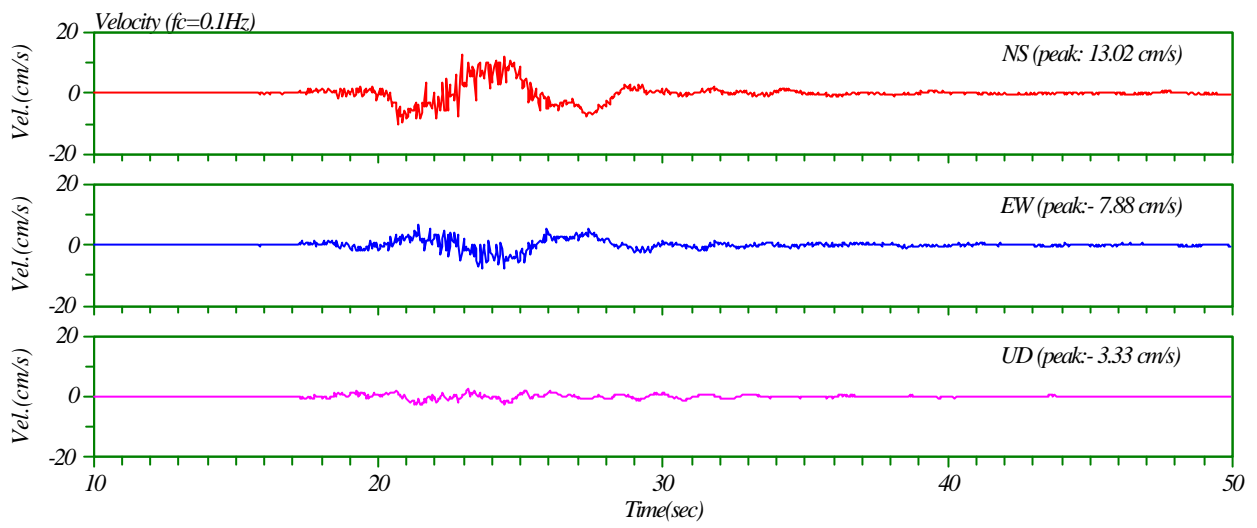
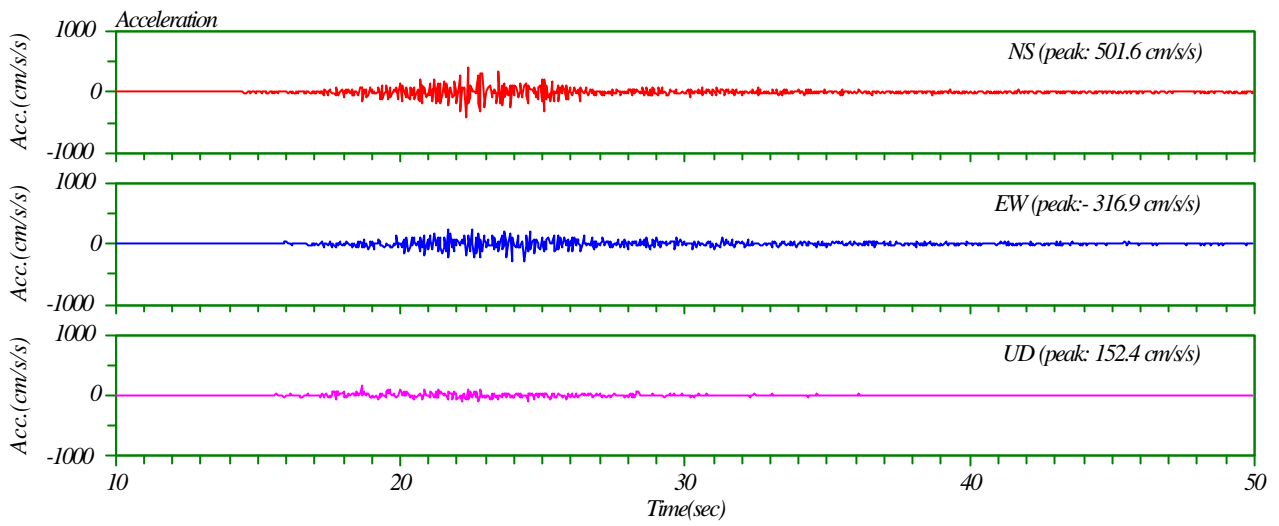


(6) SMN015 (K-Net: 広瀬)

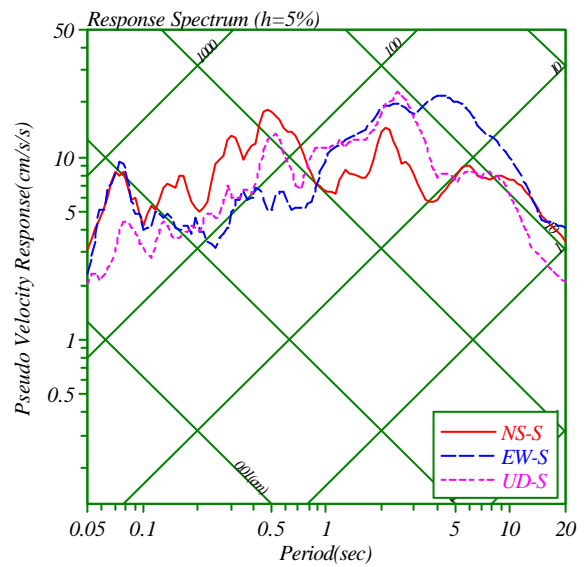
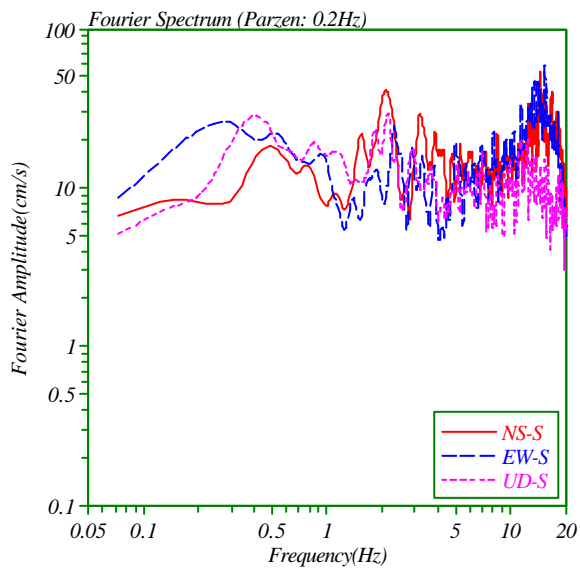
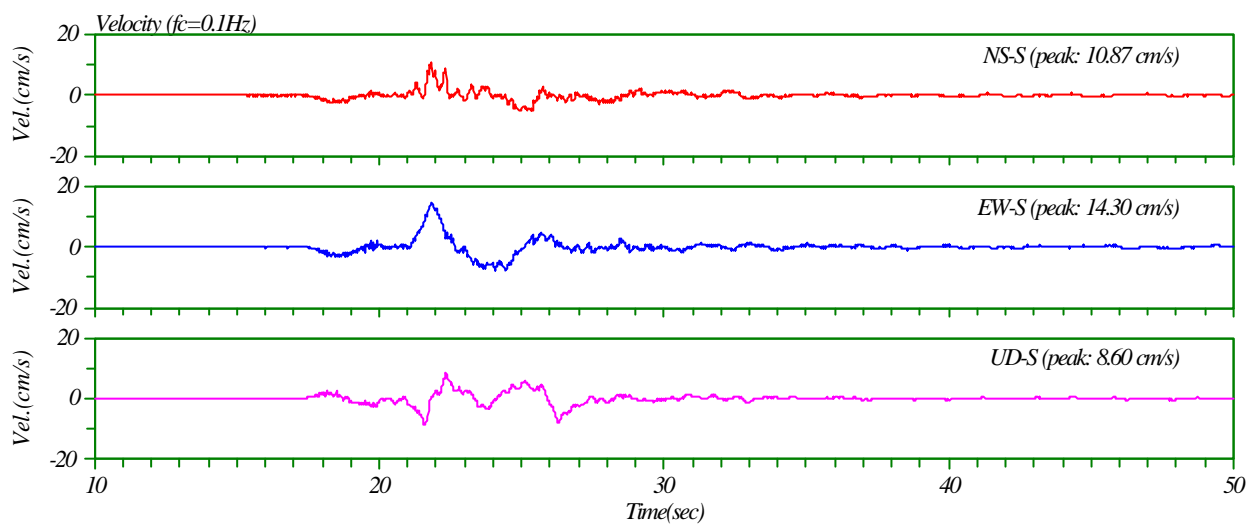
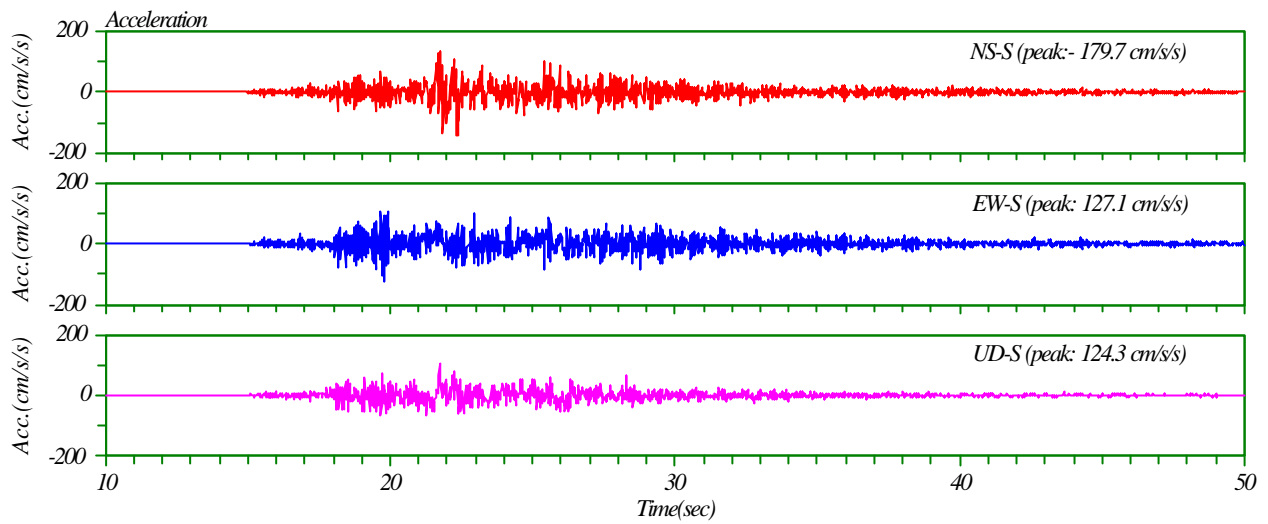


(7) SMNH02 (KiK-Net: 仁多)





(8) SMN003 (K-Net: 横田)



(8) OKYH07 (KiK-Net: 神郷)